

## auto electrical parts

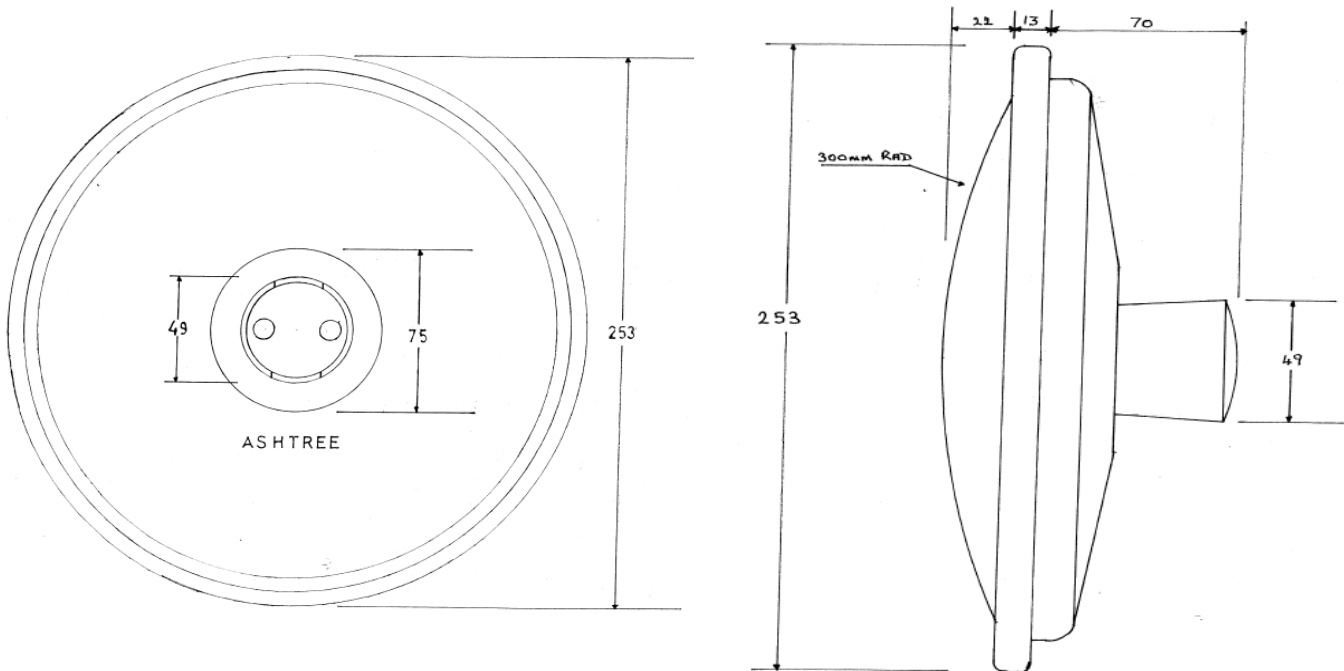
### Technical Information Sheet

#### Part No. 0-770-09

Mirror head, Circular, (255mm), to EEC specification class VI, c/w mirror arm 440mm long, 19mm diameter arm with clamp that fits 16-28mm diameter arms.



#### Technical Drawing (not to scale)



#### Specification

Type	Class VI Mirror c/w bracket
Lens material	Glass
Weight	1.6Kg
Dimensions	255mm
Radiues of Curvature	315mm
Approvals	E Marked (E11 VI 46R*048505)

The information contained in this document is correct to the best of our knowledge at the time of printing. However, specifications may change at any time without notice.